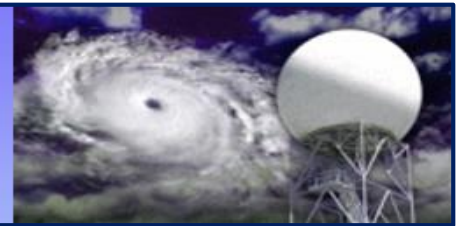


**Providing Solutions for  
Future Challenges and Technology**

**Reliability  
Performance  
Innovation**



**Pulse Systems, Inc.**

100 Energy Drive  
Canton, MA 02021-2897  
U.S.A.

Tel: (781) 828-1142  
Fax: (781) 828-8359  
E-mail: [sales@pulsesystem.com](mailto:sales@pulsesystem.com)  
[www.pulsesystem.com](http://www.pulsesystem.com)

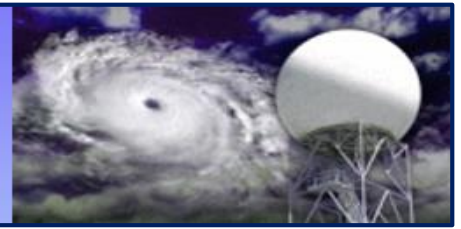
**C-Band 1 MW Transmitter Characteristics**

ITEM	PERFORMANCE CHARACTERISTICS
Transmitter Type	Coherent Pulsed Klystron Amplifier
Klystron Type	Cathode Pulsed 1 MW VKC8388
Cooling Type	Forced Air-Cooled
Prime Power Requirements	3 Phase 208/240 Vac, 50/60Hz ± 10% Power Factor >.9 12KVA Maximum 208/220 three phase 50 Amps line current Max.
Bite/Fault	Integral built-in circuits, Faults reported parallel via 15 "D Connector"
Solenoid	VYW-8388 with Power Supply
Vac-Ion Pump	Vac-Ion Power Supply/3.5kvdc 50ua max
Transmitter Output	
Transmitter Frequency	Klystron instantaneous Band Width, 5.6-5.65GHz
Peak Power	1000kW, typical
Low corona discharge levels	
RF Phase Stability	0.09 Degrees Maximum, Pulse to Pulse
RF Pulse Width	Remotely Controlled – 0.8-5.0 µsec RF Pulse Widths & Cathode TTL Gate for "nested RF"
RF Pulse Shape	Pulse Overshoot/Undershoot <3% Ripple <±0.5% Droop <0.5%
PRF	Externally Supplied, 250-1500 pps, TTL Compatible
PRF Stagger Ratio	Dual PRF – 3:2, 4:3 & 5:4, Externally Supplied
Input Signals Interface	
Remote Interface	Connector RJ-45 ETHERNET
Local User Interface	Touch screen LCD display
PRF Pulse	TTL Compatible, 250-1500 pps BNC Connector
RF Pulse	Pulsed; Amplitude 0dBm Typical, 10dBm Maximum, RF Frequency 5.6-5.65 GHz Connector; SMA
Signal Conditioning	RF Pulse Rise/Fall Time shall be adjustable to optimize the spectrum occupancy in the Exciter supplied by the buyer.
Prime Power	3 Phase, 4 wire with separate Ground
Output RF Signal Interface	WR187 Circular Cover Flange
Environment	Ambient Temperature, 0 to 50 Degrees Celsius Humidity, 0 to 100 %, Non-Condensing
Physical Size	
19 Inch- Electrical Control Cabinet	Length: 42" Width: 23" Height: 86" Estimated Weight: 220 Lbs
24 Inch- Klystron Cabinet	Length: 43" Width: 28" Height: 86" Estimated Weight: 550 Lbs



Providing Solutions for  
Future Challenges and Technology

Reliability  
Performance  
Innovation



***Pulse Systems, Inc.***

100 Energy Drive  
Canton, MA 02021-2897  
U.S.A.

Tel: (781) 828-1142  
Fax: (781) 828-8359  
E-mail: [sales@pulsesystem.com](mailto:sales@pulsesystem.com)  
[www.pulsesystem.com](http://www.pulsesystem.com)

## C-Band Klystron Transmitter



**PSI**